



ЧЕЛЯБИНСКИЙ КРАНРЕМОНТНЫЙ ЗАВОД

CHKRZ

CRANE CATALOGUE

Sale, repair and rent of
DEK, RDK, MKG, SKG crane models.

Office: Office 504, 11-L Troitskiy highway, Chelyabinsk.

Manufacturing base: Facility 1, 30 Pochtovaya Street,
Voznesenka village, Sosnovsky district, Chelyabinsk region.

8 800 200 7152 +7 (351) 214-00-55 +7 (351) 214-00-77

E-mail: info@chkrz.ru



chkrz.ru

8-800-200-71-52 | 8(351)214-00-55



INDUSTRIAL HOLDING «CONSTRUCTION MACHINERY»

The Russian industrial company, comprising the enterprises for manufacturing and sale of cranes, spare parts, and non-standard equipment production. Industrial Holding "Construction Machinery" is the only supplier of RDK-M model cranes and spare parts.

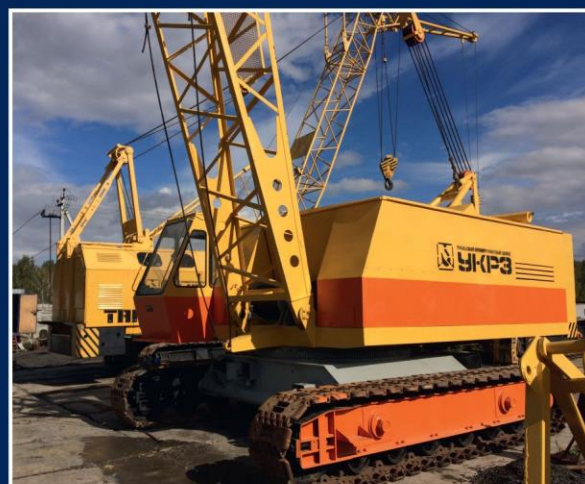
IHCM main operating divisions:

- Chelyabinsk Crane Repair Plant produces crawler cranes and spare parts; provides overhaul.
- House of Commerce "Chelyabinsk Crane Repair Plant" produces and sales special machines.
- "Techmechenergосervіs" is responsible for storage tanks reconstruction and manufacturing of non-standard equipment
- Stroy mash company produces RDK-M cranes.

Chelyabinsk Crane Repair Plant proved itself well in the market of construction and the load-lifting equipment. More than five years our enterprise has been doing capital repairs of RDK-250, DEK-251, MKG-25, DEK-631A crawler cranes and has been producing spare parts for them.

All spare parts are made up from high-quality steel grades (which have the properties of increased strength and wear resistance) in compliance with the modes of the product heat treatment and according to the drawings and specifications of the manufacturers.

Products of Chelyabinsk Crane Repair Plant are marked, which gives us the opportunity to perform our warranty obligations during the year.



OUR AWARDS



Chelyabinsk Crane Repair Plant offers:

- spare parts for running and mechanical parts of RDK, DEK, MKG, SKG crawler cranes (reducers and supporting rollers, idler and drive wheels, crawler belts, tracks, shafts, gears, etc.).
- rotary supports, frames, rotary platforms for RDK, DEK, MCG, SCG crawler cranes, restored after the audit
- new and restored after the audit boom equipment for RDK, DEK, MKG, SKG crawler cranes
- electrical equipment (diesel generator stations, control cabinets, electric motors, current collectors, etc.).
- crane brakes and hydraulic pushers, crane brake shoes, and brake shoe facings.
- crawler crane repair services
- services for installation, dismantling, and relocation of crawler cranes
- electrical switchboard equipment (up to 0.4 kV)
- services for non-standard equipment production

High-quality approach to the client, reasonable prices, minimum shipment terms, the entire range of spare parts, and flexible payment system make our company a reliable partner for years.

OUR ACHIEVEMENTS

200

Cranes sold

350

Repaired cranes

1300

Spare parts manufactured

12

Years of reliable work

DEK-251

25 T

LOAD CAPACITY

36 m

THE LIFT HEIGHT

25 T

CARGO WEIGHT WHEN
MOVING



Reliability



Easy and affordable
maintenance



Versatility and multifunctionality



Best value for money



Efficiency

DEK-251 crawler crane is widely used at energy complex facilities, when constructing hydro power plants, regional hydroelectric power plants, heat-and-power stations, and in the process of handling bulk cargo.



Diesel-electric DEK-251 crane is designed for:

- construction and installation and loading/unloading works in civil and industrial construction (if equipped with a hook of the main and/or auxiliary lifting).
- handling bulk cargo, when equipped with a mechanical double-jaw grab.
- loading/unloading at the ferrous metal scrap facilities, when equipped with a multi-shell grab or an electromagnetic washer of DKM type.
- when equipped with a mast (KOG type), diesel hammer (SP type) or "ROPAT" company's hammer (МГ3ш, МГ5ш type), this crane may be used as pile-driving equipment.

The main units of DEK-251 crawler crane according to the Manual:

- the support part consists of a running platform, two crawler carts (right and left) and a traveling mechanism.
- roller support
- swivel part
- electrical equipment
- boom equipment and wire ropes.

Power supply of the crane electric equipment is carried out from the AD-60 diesel power plant, installed on a rotary platform, with a capacity of 60 kW. If necessary, it can be connected to an external network of three-phase AC 380V.

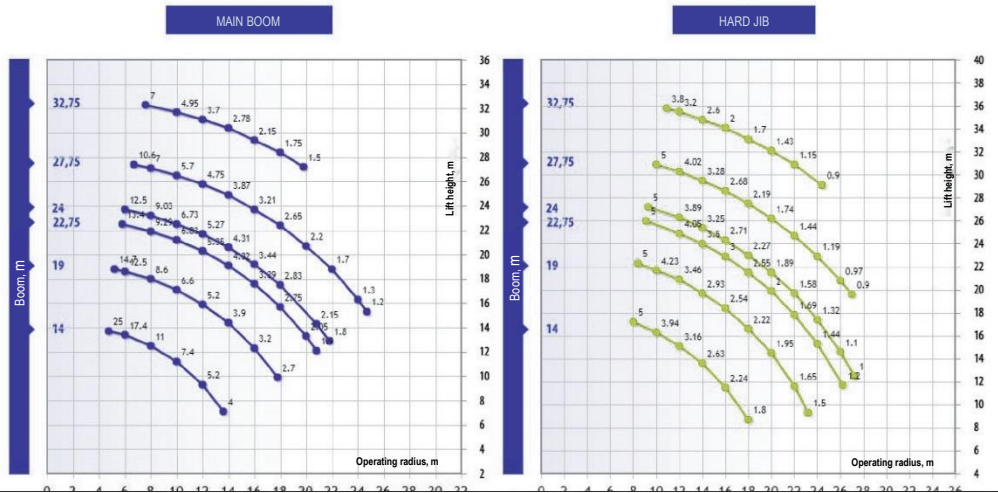


CRANE SPECIFICATIONS

Maximum capacity, t/radius, m	25/4,75
Load moment, t*m	118.75
The weight of cargo when traveling, t	25
Boom length (main / maximum), m	14,0/32,75
Lifting height of the main / maximum boom, m	17,7/32,3
Maximum operating radius of the (main) boom, m	(13,6)24,7
Maximum lowering depth, m	5
Hard jib length (min / max), m	5
Boom length for a hard jib (min / max), m	14/32,75
Maximum load capacity of a hard jib, t	5
Maximum operating radius on a rigid jib, m / load capacity, t	27,2/1,0
Homing jib length (min / max), m	-
Tower length of a shunting jib (min/max), m	-

CRANE SPECIFICATIONS

Maximum lifting height on the shunting jib, m / load capacity, t	-
Load lifting speed nominal / increased (when K=max), m / min	5; 10
Minimum cargo landing speed, m / min	0.4
Traveling speed, km / h	1
Clearance, mm.	415
Track in a working position, mm	3.73
Weight of the crane with the main boom, t	34.6
Ground pressure, kg / cm2	0.707
Internal combustion engine / power, kW.	ЯМ3-236М2,132 kW
Generator, kW	LSA44,2 Vs3 60 kW
Safety device	ОГМ-240
Average diesel fuel consumption, when operating in stand-alone mode or as a source of electricity, l / h	19.7



DEK-321

32 T
LOAD CAPACITY

47.2 M
THE LIFT HEIGHT

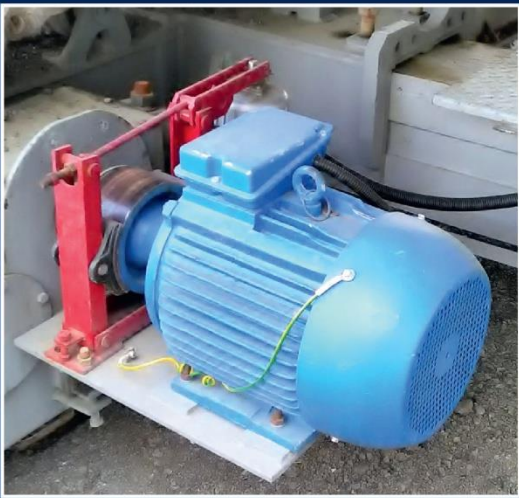
32 T
CARGO WEIGHT WHEN
MOVING


Easy and affordable
maintenance


Reliability


Versatility and multifunctionality

DEK-321 crane with a hard jib of 5 and 10 meters can be powered by a diesel generator set of a 60 kW capacity engine, as well as from an electrical supply network of 380 Volts and 50 Hertz voltage. DEK-321 crane is unique. It can be operated in any climatic conditions and serious temperature jumps.

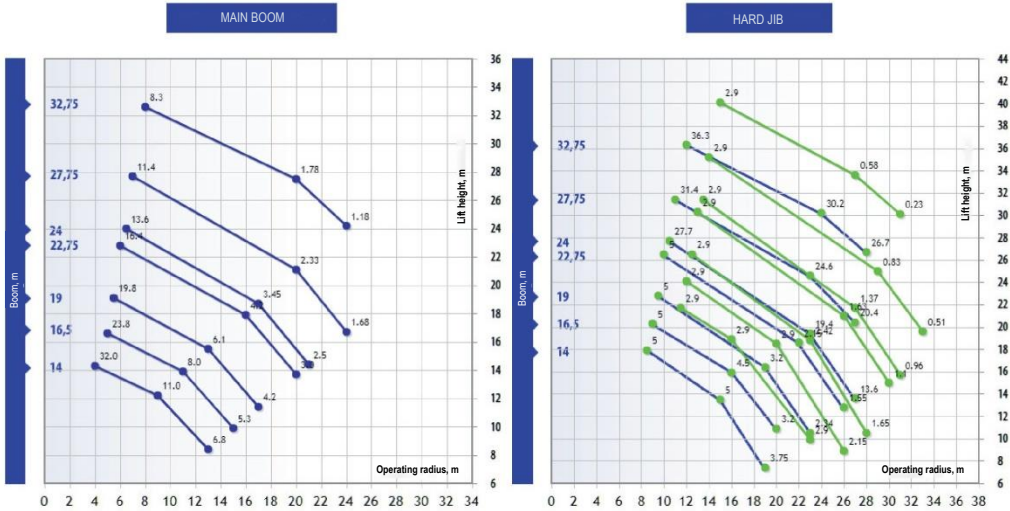


CRANE SPECIFICATIONS

Maximum capacity, t/radius, m	32/4,0
Load moment, t*m	128
The weight of cargo when traveling, t	32
Boom length (main / maximum), m	14,0/32,75
Lifting height of the main / maximum boom, m	14,3/32,6
Maximum operating radius of the (main) boom, m	24 (13)
Maximum lowering depth, m	5
Hard jib length (min / max), m	5; 10
Boom length for a hard jib (min / max), m	14/32,75
Maximum load capacity of a hard jib, t	5
Maximum operating radius on a rigid jib, m / load capacity, t	31/0,23
Homing jib length (min / max), m	19/ 24/27,75
Tower length of a shunting jib (min/max), m	5/8,75

CRANE SPECIFICATIONS

Maximum lifting height on the shunting jib, m / load capacity, t	47,2/5,05
Load lifting speed nominal / increased (when K=max), m / min	5; 10
Minimum cargo landing speed, m / min	0.4
Traveling speed, km / h	1
Clearance, mm.	440
Track in a working position, mm	2,57/3,73
Weight of the crane with the main boom, t	45.2
Ground pressure, kg / cm2	0.728
Internal combustion engine / power, kW.	ЯМ3-236М2, 132 kW; ММ3-246.4, 77 kW (depending on a configuration)
Generator, kW	60 kW
Safety device	OGM-240
Average diesel fuel consumption, when working in stand-alone mode or as a source of electricity, l / h	19.7



DEK-631A

63 T

LIFTING CAPACITY

71.2 M

LOAD LIFTING HEIGHT

50 T

LOAD WEIGHT WHEN TRAVELLING



Reliability



Easy and affordable maintenance



Flexibility and versatility



Best quality-price ratio



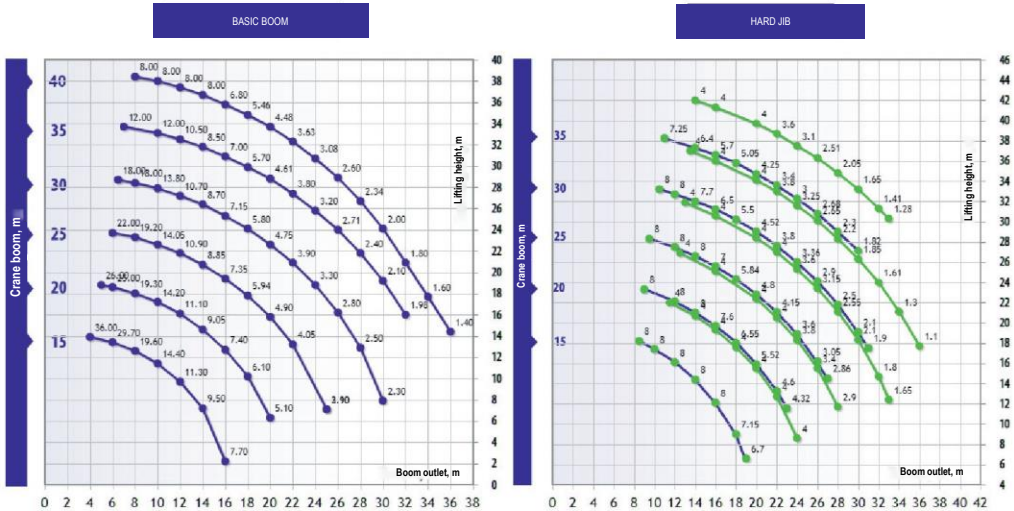
The crawler self-propelled full-revolving diesel-electric crane DEK-631 is a unique crane which is intended generally for installation of large-block structures and large processing equipment. It can also be used for loading and unloading operations. Crane operations are allowed with the attachable equipment: single-line clamshells, vibratory drivers, sheet-pile extractors, drilling equipment. The crane model DEK-631 found its greatest application in construction, and then in the equipment installation for hydro and thermal power stations.

The main units of the crawler crane DEK-631 (DEK-631A) according to the Operations manual are:

- the bearing part consists of a running platform, two crawler trucks (right and left) and a travel mechanism,
- roller bearing,
- revolving superstructure,
- electrical equipment,
- boom equipment with wire rope bracings.

The electric equipment of the DEK-631 (DEK-631A) crane model can work both with the diesel generator set installed on it with an output of 75 kW or 100 kW, and with an external network of three-phase alternating current with a voltage of 380V. The crane operation safety is provided by a system of instruments and devices including the crane load limit switch (our company installs the OGM-240 model safety device) which provides:

- overload and roll over protection
- damage protection when operating in confined working space (operating range limitation system)
- crane loads registration and record
- compliance with the requirements of Rostekhnadzor (Federal Environmental, Industrial and Nuclear Supervision Service of Russia)



CRANE TECHNICAL SPECIFICATIONS

Maximum lifting capacity, t /with outlet, m	63/5.1
Load moment, t*m	321.3
Load weight when travelling, t	50
Boom length (basic/ maximum), m	18/42.0
Load lifting height on the main / maximum jib, m	16.2/40
Maximum (basic) crane boom outlet, m	(16) 34.5
Maximum lowering depth, m	21.8
Hard jib length (min / max), m	10
Boom length for hard jib (min / max), m	18/42
Maximum lifting capacity on a hard jib, t	10
Maximum outlet on a hard jib, m / lifting capacity, t	39.7/2
BSO model shunting jib length , m	15/24/29/37
Tower length for shunting jib (min/max), m	36
Filling elements length for boom extension, m	6/12

CRANE TECHNICAL SPECIFICATIONS

Max lifting height on the shunting jib, m / lifting capacity, t	71.2/5
Load lifting speed nominal / increased (at K=max), m / min	4; 8
Minimum load lowering speed, m / min	0.65
Travelling speed, km / h	0.5
Clearance, mm	495
Track in operating position, mm	4.6
Crane weight with basic boom, t	83.5
Ground pressure, kg / cm2	1
Internal combustion engine / output, kW.	YaEP-238M2,176 kW
Generator, kW	100 kW
Security device	OGM-240
Average diesel fuel consumption rate when operating stand-alone or as an electric power source, l / h	32.8

RDK-250

25 T

LIFTING CAPACITY

47.2 M

LOAD LIFTING HEIGHT

32 T

LOAD WEIGHT WHEN
TRAVELLING

25 T

LIFTING CAPACITY

47.2 M

LOAD LIFTING HEIGHT

32 T

LOAD WEIGHT WHEN
TRAVELLING

RDK-250M

RDK model assembly full-revolving crane with lifting capacity of 25t and diesel-electric drive is designed for the installation of built-up concrete and steel structures, industrial facilities processing equipment, road structures.

The RDK-250 crane model drive is diesel-electric. Diesel generating set is equipped with diesel (usually A-O1 or D-440, less often D-108) and the generator of 1500 r/min, connected by rubber annulus coupling. All RDK model crane's mechanisms are electric. The crane can also operate from the alternating current external network with the voltage of 380V and frequency of 50 Hz.

RDK cranes model were adapted to the technical requirements and climatic conditions and supplied (mainly) to the USSR facilities. In the USSR there were created repair and engineering enterprises for RDK-250 crane model service.



Since the beginning of the 2000s, our enterprise has delivered to customers almost 1,000 RDK-250 crane models and almost 1,000,000 spare parts units for RDK crane models.

Innovation

Mobility and economy - the crawler cranes transportation to the construction areas can be carried out on standard semi-trailers. The price is relatively lower than of Russian prototypes.

Comfort and ergonomics -supply with modern cabin with panoramic windows and ergonomic operator's seat. Easy joysticks control provides smooth and easy-to-operate control

Efficiency - power supply from an external network of 380V or from a portable diesel generator power plant of 60 kW. Safety is provided by a complex of instruments and security devices of OGM-240 model.

Operation in any climatic conditions from +40 to -40 C

This crane can be supplemented with the following equipment: Pile installation equipment of SVU-6 model for piles and sheet piles sinking.



Reliability



Flexibility and versatility



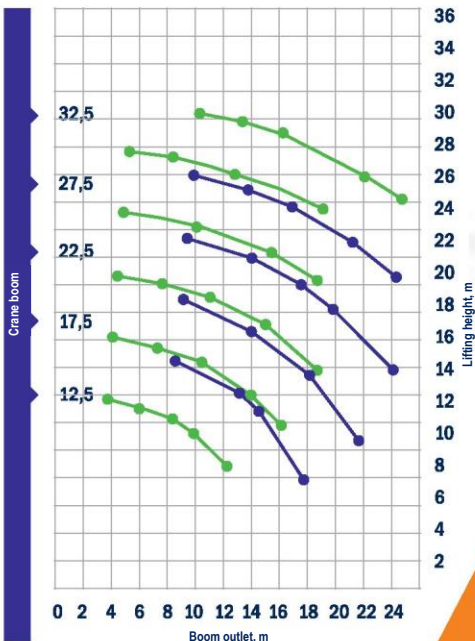
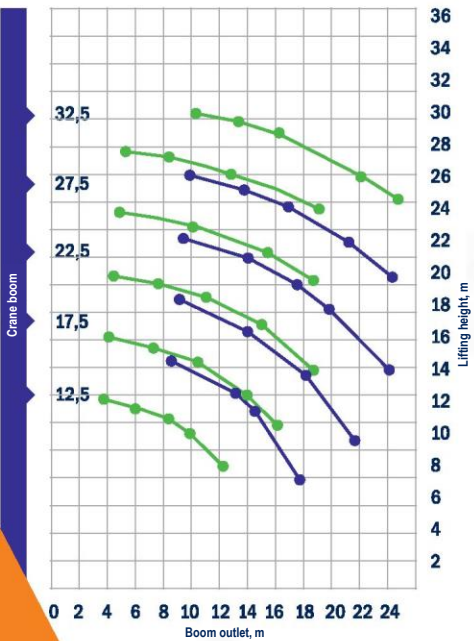
Best quality-price ratio

CRANE TECHNICAL SPECIFICATIONS

Maximum lifting capacity of basic / auxiliary hoist, t	25/5
Boom / jib length, m	27/5
Maximum load moment, kNm (tf.m)	1160(118.75)
Maximum lifting height, m	27
Maximum lowering depth, m	5.0
Minimum / maximum outlet, m	4.75/24.5
Operation area of all kinds of working equipment, degrees	360
Crane mounting width, mm	3225
Crane mounting length, mm	4710
Height (in transport position), mm	4300
Clearance, mm	450
Running platform width, mm	3150

CRANE TECHNICAL SPECIFICATIONS

Maximum lifting capacity, t	25
Boom length, m	12.5-35.3
Inclination angle, deg	40-84.5-60-84.5
Maximum load moment	110-77.00
Platform rotation speed, rpm	0.27-1.13
Travel speed	1.0-1.17
Hook hoist	0.37-7.37
Crane weight without working equipment, tons	39
Length in transport position, m	5.4
Width in transport position, m	2.21
Height in transport position, m	2.3
Ground pressure, MPa	0.079



FOR DEK CRAWLER
CRANES MODELS



SVU-6 on RDK model basis



DEK MODEL WITH DRILLING EQUIPMENT



DEK-251C MODEL WITH PILE
DRIVER

ATTACHABLE EQUIPMENT:

- Pile-driving equipment
- Drilling equipment
- Pile installation equipment
SVU-6 model
- Electromagnet
- Clamshell



DEC model with clamshell



DEC-321

FOR DEK CRAWLER
CRANES MODELS

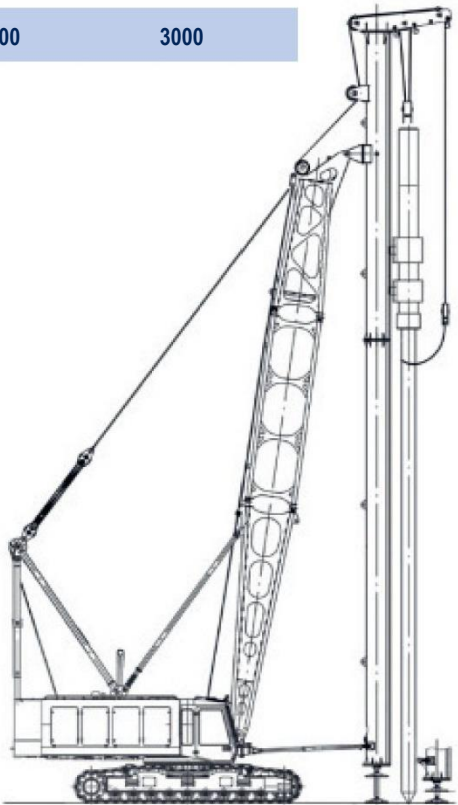
Hammers

Name	Weight, kg	Tup weight, kg
Diesel pipe		
D8-22	1950	800
D12-42	3000	1280
SP-75A	2700	1250
D16-32	3250	1600
SP-76A	3850	1800
D19-42	3695	1820
SP-77	5500	2500
D25-32	5610	2500
D30-32	6110	3000
SP-78A	7700	3500
SP-79	10000	5000

Drilling equipment

	SO-2	SO-3
Output, kW	55	75
Output shaft rotation speed, rpm	43	75

Name	Weight, kg	Tup weight, kg
Diesel rod		
SP-4	2500	1250
SP-5	3100	1800
SP-7	4700	3000



DEK CRANE MODELS ATTACHABLE EQUIPMENT

	Attachable equipment total weight (outlet 6 meters, t)	Mast limit wight, t	Electromagnet	Clamshell
251	AO 17.4	5	M-42 (GEM-117), weight 1.5 tons	Capacity 2.5M ³ , weight 2T. Other-on TR for total weight no more than 8 tons.
321	UP TO 20.4	5.5		
361	UP TO 29.7	6		
401	up to 30.1	7		
501	up to 40.6	7		
631A	up to 46	7	M-46 on TR	
801	up to 55	8		
1001	up to 80	10		

Our crane booms stretch across Russia.



MARBLE MINING



WE ARE ALWAYS HAPPY TO OFFER YOU OUR SERVICES:

- Civil engineering
- Industrial engineering
- Loading and unloading operations
- Crawler cranes rent
- Crawler cranes maintenance and repair service
- Crawler cranes repair service
- Spare parts manufacture
- Setting up, installation of all kinds of security devices
- Cranes installation/dismantlement
- Mobile teams
- Relocation, commissioning
- Crawler cranes diagnostics

WARRANTY

We are confident in the our products quality, that is why **the warranty period for our crawler cranes is 12 months** since put into operation.

